

ALL-O-MATIC



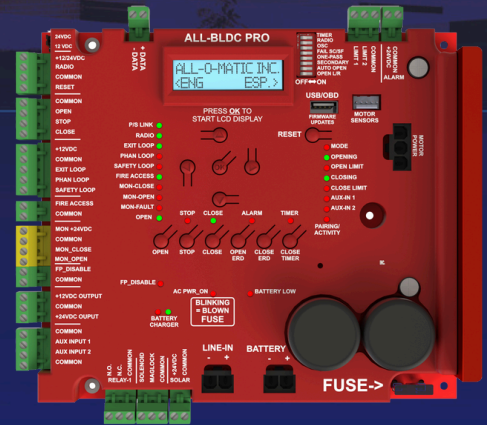
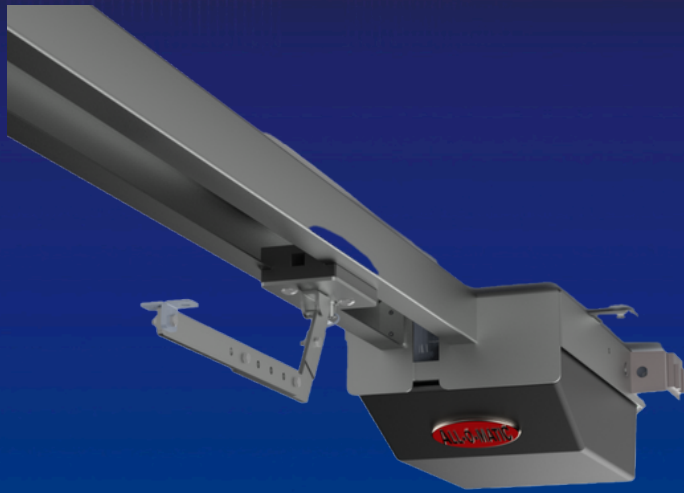
Power Door Products
(914) 698-5083
www.PowerDoorProducts.com

allomatic.net

OH-200DC PRO

OVERHEAD GATE OPERATOR

ALL-BLDC PRO CONTROL BOARD



ALL-BLDC PRO FEATURES

- ✓ LCD DISPLAY WITH ON BOARD DIAGNOSTICS
- ✓ AUTO CLOSE TIMER & OBSTRUCTION SENSING DIGITAL ADJUSTMENTS
- ✓ INTEGRATED WIRELESS PRIMARY/SECONDARY
- ✓ PARTIAL OPEN OPTION
- ✓ PROGRAMMABLE AUXILIARY INPUTS
- ✓ USB PORT TO EXTRACT DIAGNOSTIC DATA AND FIRMWARE UPDATES
- ✓ BUILT-IN VOLT METER THROUGH LCD DISPLAY
- ✓ CYCLE COUNTER AND MUCH MORE



PRE-WIRED
LOOP RACK



AOM-RED EYE
INCLUDED



QUICK ARM RELEASE



JAMB TRACK HARDWARE



RESIDENTIAL



COMMERCIAL

SLIDERS | SWINGERS | OVERHEADS

The standard by which all other automatic gate operators are measured.

SCAN FOR
PRODUCT
INFORMATION



UL 325 2018
COMPLIANT

UL 991
COMPLIANT

CSA C22.2 #247

ALL-O-MATIC



Power Door Products
(914) 698-5083
www.PowerDoorProducts.com

allomatic.net



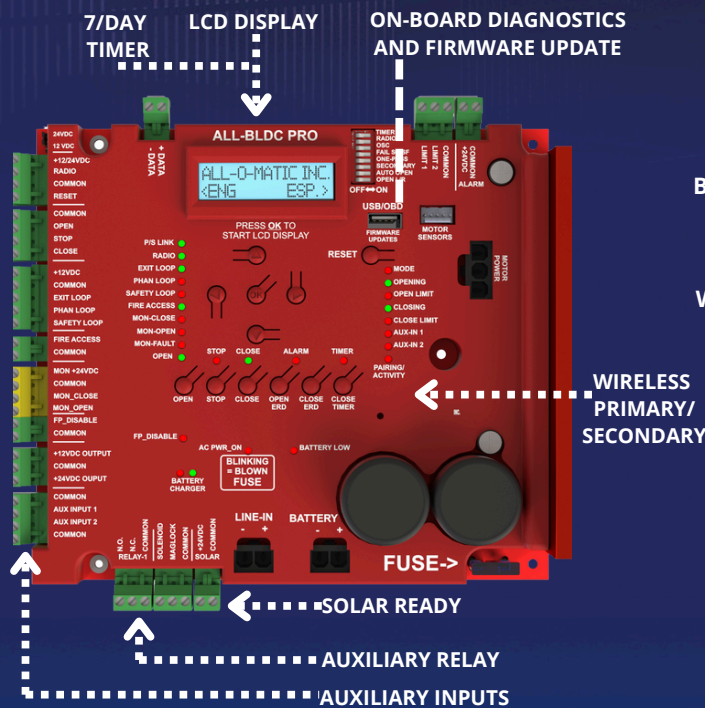
SCAN FOR
PRODUCT
INFORMATION

OH-200DC PRO

OVERHEAD GATE OPERATOR

SPECS

Max Gate Weight	800 lbs.
Max Gate Length	20 feet
Warranty	5 year commercial
Motor	½ HP motor
Gate Speed	14-26 seconds for full open (6.5' to 8' gate)
Power Options	120 VAC
Duty Cycle	Continuous
Battery Backup	Integrated, with (2) 7Ah 12VDC batteries.
Battery Backup Capacity	100 cycles on 800 lb. gate
Temperature Range	-40 to 160°
Gearbox Ratio	30:1
Width X Length X Height	13" X 144" X 8"
Shipping Weight	100 lbs.
Emergency Release	Lockable quick release drive arm and carriage
Belt Size	4L-200 (AX18)
Main Sprocket Size	41B15X5/8
Chain Size	41NP
Breaker Requirement	20 amp dedicated
Gearbox Pulley	2 ½" with ½" bore
Motor Pulley	2" with 5/8" bore



AVAILABLE ACCESSORIES



The Warrantor warrants the OH-200DC PRO Gate Operator. ALL-O-MATIC INC warrants its gate openers for a period of five (5) years in commercial installations to be free from defects in circuitry, motor, gear box and workmanship. This warranty applies from the date of purchase to the original owner. Warrantor will repair or, at its option, replace any device which it finds to require service. This device must be sent to the warrantor at the consumer's expense. The warrantor will return the repaired or replaced unit to the customer at the consumer's expense. Labor charges for dealer service or replacement are the responsibility of the owner. These warranties are in lieu of all other warranties either expressed or implied, and ALL-O-MATIC INC shall not be liable for consequential damage. All implied warranties of merchantability and or fitness for a particular purpose are hereby disclaimed and excluded. This limitation is not valid in jurisdictions which do not allow limitation of incidental or consequential damages or limitation of warranty periods. Caution in order to obtain this policy, please complete the registration card and send it by mail within 30 days of purchasing from ALL-O-MATIC INC. or your INSTALLER. If not registered only a one year warranty on all parts will be provided.

The standard by which all other automatic gate operators are measured.

UL 325 2018 COMPLIANT UL 991 COMPLIANT

CSA C22.2 #247